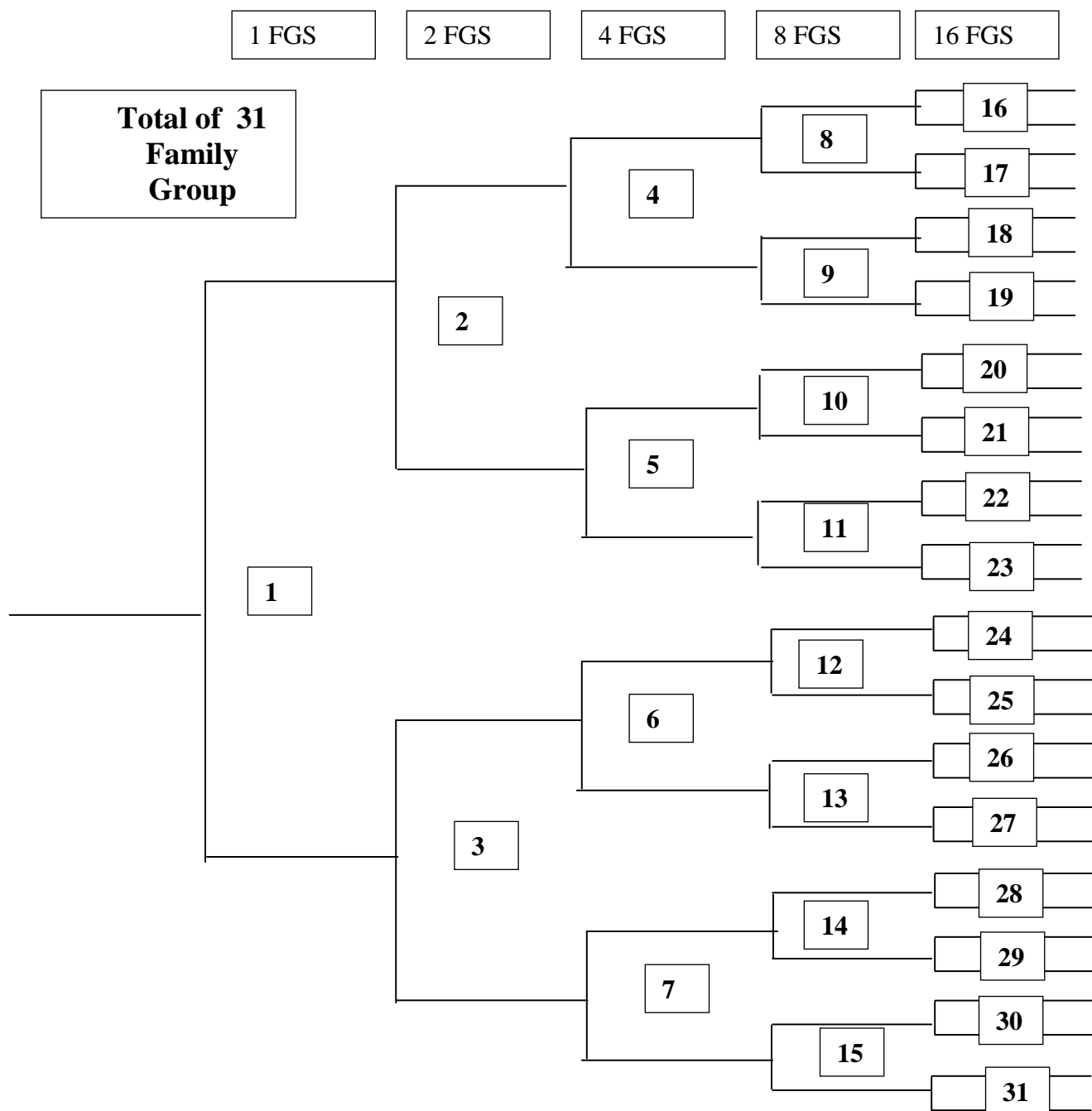


Sam Lower's Descendant Research Conference Handouts

Find All Related Families

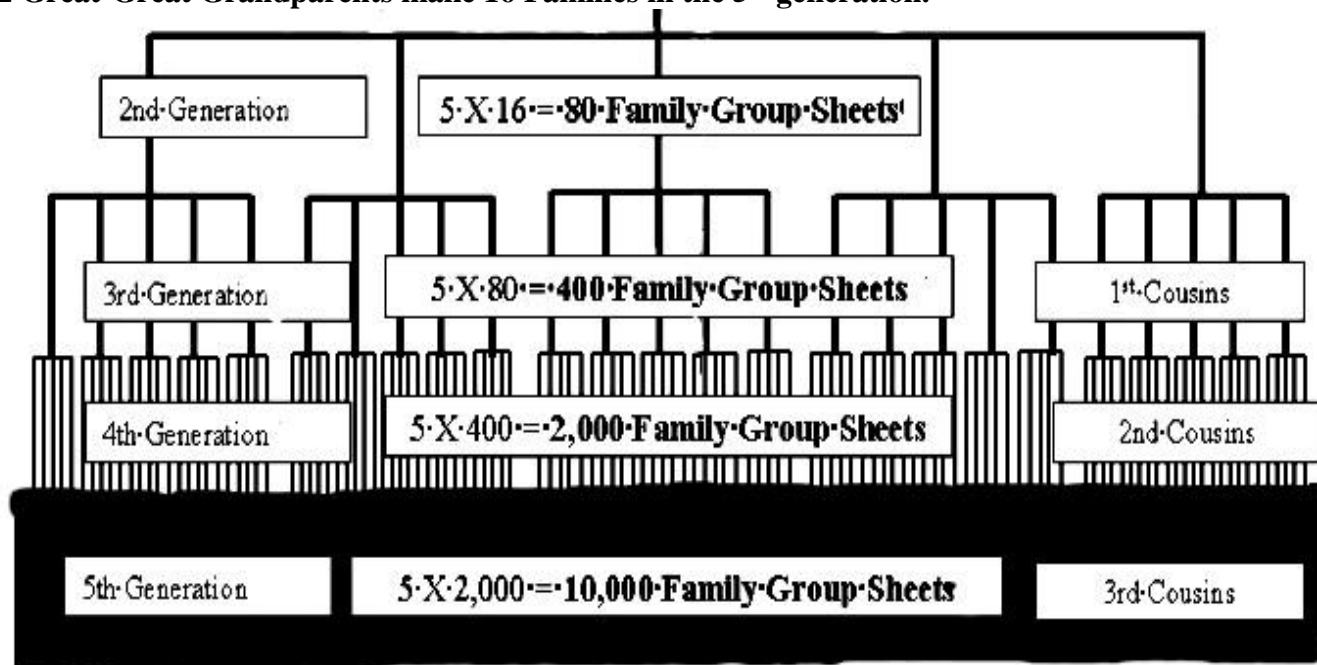
Ancestral Research Finds less than 1% of Them

Most family researchers look to Adam instead of their cousins. They want to extend their lines back beyond the 5th generation. This is a worthy goal. A much more powerful and worthy goal is to find your cousins and get their temple work done. Finding one end –of –line ancestor will often take more time than finding 100 of your cousins in your first five generations. So you can find and do temple work for 100 of your cousins in about the same time you are doing temple work for one new ancestor. Finding end of line ancestors also takes many genealogical skills. Finding cousins is a far easier task. Build your skills first in finding cousins. When that task is done reach for the next generation of ancestors. Remember, Uncle Jim and Aunt Jane gave up the search. What was the reason? Was it because they ran out of time or became discouraged for lack of skills or records. Do your research in the area that will be the most productive for temple ordinances. Bragging rights to being a descendant of Adam is not a very enlightening discovery. Most people already know they are a descendant of Adam. Finding and saving your cousins will have greater eternal rewards for them and you.



Five Descendant Generations of Family Group Sheets

32 Great-Great Grandparents make 16 Families in the 5th generation.



$$80 + 400 + 2,000 + 10,000 = 12,480$$

Descendant Family Group Sheets (Based on 5 children per family No Multiple Marriages)

1 st Generation your 16 great-great grandparents.		16
2 nd Descendant generation great grandparents and other families on their level	16 x 5 =	80
3 rd Descendant generation your grand parents and other families on their level	80 x 5 =	400
4 th Descendant generation your parents and other families on their level.	400 x 5 =	2,000
5 th Descendant generation you as a child and other families on your level.	2000 x 5 =	10,000
12,496 FAMILY GROUP SHEETS in 5 descendant generations		12,496
About 75,000 People New People per FGS are 6, (5 children and 1 spouse)	12,480 x 6 =	74,880

Ask yourself - How many of my family group sheets did Uncle Jim and Aunt Jane do? Jim and Jane normally did the ancestor lines and not the descendant lines. This is 31 family group sheets or 186 people.

Little work has been done outside the direct line ancestral families.

The percentage of family groups sheets completed then is $31 / 12,480 = .25\%$. **This is less than 1%**.

On 31 family group sheets we have 186 people. On 12,496 family group sheets we have 74,880 people.

Descendant Research finds the lost fold. Ancestor Research finds only one lamb at a time.

This brings to my mind the parable of the good shepherd. He had his 99 fold found and safe and he went to find the one that was lost. What are we doing? In ancestor research we are only looking for one lamb at a time. Where is our 90 and 9. Doing descendant research finds the 90 and 9 while ancestor research finds only one.

Search for Descendants - Bring Eternal Wealth to Your Family

- The Savior went looking for the lost Lamb after he had the fold of 99 safely in the pen.
- Pedigree Researchers seem only interested in the lost sheep from their pedigree.
- Descendant Researchers find all in the lost folds.

On 31 family group sheets we have 186 people. On 12,496 family group sheets we have 74,880 people.

Look how the numbers expand if you go beyond 5 generations

Sam Lower's Descendant Research Conference Handouts

<u>Generations</u>	<u>Ancestors</u>	<u>Descendants</u>	<u>Rratio</u>	<u>Approximate Success Ration</u>
5	186	74,880	403 to 1	400 to 1
6	378	749,760	1,983 to 1	2,000 to 1
7	762	7,499,544	9,842 to 1	10,000 to 1
8	1,530	74,999,040	49,019 to 1	50,000 to 1

1. Use the Descendant Chart as your research guide:

If we look at a descendant chart we can easily see where people are missing. All you have to do is look at the generation numbers and see if they are bunched together. For example if a five generation descendants chart has groupings of the numbers 2, 3, or 4 together that implies the persons had no children. The more likely answer is that no one has found the children and put them in the family tree.

My great-great grandparents were born around 1800. Their descendants will be listed in records from about 1800 to the present. It so happens that this is where all of the easily available records to research are. One can spend a lot of time trying to go back beyond their 5th generation. The fruit that is easy to pick from your family tree is in the lower branches or the descendant generations from your great-great grandparents.

Why spend your time trying to climb ever higher in your family tree when you have thousands of family group sheets you can fill out from the lower branches. Your success rate in the lower branches will be a hundred times more productive than in the higher branches. Pick the fruit on the low branches and meet your living cousins and enjoy new extended family members.

How Many Missing Families: In a five generation descendants chart, each number 2 shown on the descendant's chart without children may represent 155 missing families. For each number 3 shown without children 30 families may be missing, for each number 4 shown without children 5 families may be missing.

SUMMARY:

When you are on top of the mountain don't look up at the stars look down at the beautiful fields ready to harvest. Review each of your 16 Great-Great-Grandparents 5 generation Descendancy charts. Look for numbers 2,3,4, and 5 grouped together without children or spouses. Determine if the person died before they were married. If there is no indication that they died then find them in genealogical records and grow your family tree. There is a bounteous field ready to harvest in the 16 descendant generation lines from your great-great grandparent families. They are all closely related to you. They are **your 3rd cousins** or closer. If we concentrate our work in the first five generations we will have great success and less chance of becoming discouraged.

Creating Working Files from Ancestral File (Ogden Family History Center)

Step 1: Make Descendant GEDCOMs for your 8 great-great grandfathers.

1. In the Ancestral File Pedigree Screen If your father or Mother is in the first person on the pedigree use the Right Arrow key to arrow over to the father of your great-great grandparent. This will be the last person in a five generation pedigree. With the last person highlighted press **F8** to display a descendants list. NOTE: The descendant line should begin with a person normally born in the 1780-1810 time frame.
2. In the "Descendancy Chart - Number of Generations" Window enter **5 generations**.
3. Press **Enter** to display the Descendancy Chart.
4. With the number 1 person highlighted on the Descendancy Chart press **F2** to open the Print Copy window.
5. Select "C. Create GEDCOM File of descendants" and press **Enter**.
6. In the copy GEDCOM to Diskette screen review the selections and press **F12** to continue.
7. Press **Enter** in the "You have selected the following options" screen.
8. In the PLEASE NOTE copyright explanation screen press **F12** or Enter to continue.
9. In the drive selection screen, **arrow down and highlight** "Drive C: Hard Drive (Diskette).
10. Press **Enter** to open the "Select Diskette File" screen. Current Directory is C:\.
11. Enter **1d** in the Selected File window. This is the name for the Descendants GEDCOM.
12. Press **Enter** to create the **1d** GEDCOM. If a WARNING note is displayed, press **Enter** to continue.
13. When the "Print/Copy" screen is again displayed press **esc** to return to the Descendancy Chart screen.

Sam Lower's Descendant Research Conference Handouts

14 Press the F-10 key and go back to the Pedigree chart.

NOTE: You have completed the Descendancy GEDCOM for your Great Great Grand father and it is on the C:\ Hard Drive and titled "1d". Your next step is to repeat the descendant GEDCOM steps for your 7 other Great-Great Grandfathers. Repeat the above steps for each and Number the GEDCOMs **2d** thru **8d**.

Step 3: Make Descendant GEDCOMs for your 8 great-great grandmothers.

1. In the Ancestral File Pedigree Screen use the Right Arrow key to arrow over to the father of your great-great grandmother. With him highlighted press **F8** to display a descendants list.
2. In the "Descendancy Chart - Number of Generations" Window enter **5 generations**.
3. Press **Enter** to display the Descendancy Chart.
4. With the number 1 person highlighted on the Descendancy Chart press F2 to open the Print Copy window.
5. Select "C. Create GEDCOM File of descendants" and press **Enter**.
6. In the copy GEDCOM to Diskette screen review the selections and press **F12** to continue.
7. Press **Enter** in the "You have selected the following options" screen.
8. In the PLEASE NOTE copyright explanation screen press **F12** or Enter to continue.
9. In the drive selection screen, **arrow down and highlight** "Drive C: Hard Drive (Diskette)".
10. Press **Enter** to open the "Select Diskette File" screen. Current Directory is C:\.
11. Enter **9d** in the Selected File window. This is the name for the Descendants GEDCOM.
12. Press **Enter** to create the **9d** GEDCOM. If a WARNING note is displayed, press **Enter** to continue.
13. When the "Print/Copy" screen is again displayed press **esc** to return to the Descendancy Chart screen.
14. Repeat this operation for your remaining 7 Great-Great Grandmothers numbering the GEDCOMs **10d** through **16d**
14. Next exit FamilySearch by pressing **esc**, then **Enter**, then **esc**, then **esc**, then **esc** to return to the Desktop.

NOTE: You have completed the 16 Descendancy GEDCOMs for your Great-Great Grand parents and they are on the C:\ Hard Drive and titled "**1d** thru **16d**".

Your next step is to Import the 16 descendant GEDCOMs into 16 working files.

Step 4: Prepare 16 working files for your Great-Great Grandparents by importing the GEDCOMs.

1. Open your genealogy program and go the File Menu and create a New Family File.
2. Name the Files after the Names and Birth year of your great-great Grandparents.
3. Import the GEDCOM descendant number that goes with the name of your great-great grandparent.
4. Go to the File Menu and Select Import.
5. Navigate to the C: Drive and select the **1d** GEDCOM then Import it.
6. Repeat the above 5 steps for each of the remaining 15 GEDCOMs.
7. When you are finished you will have 16 working files and lots of work to do.
8. Enjoy! It will likely be the most eternal work you will ever do in this life.